



**Durable joinery repair products,
tools and accessories**

TOTAL JOINERY REPAIR SOLUTIONS



PRODUCT SELECTOR



	UNI	1	4	16	BF	COOL	SF	MP	
	DRY FIX® UNI *	DRY FLEX® 1 **	DRY FLEX® 4 **	DRY FLEX® 16	BIO FLEX™ ALLROUND	BIO FLEX™ COOL	DRY FLEX® SF	DRY SEAL™ MP	
Application	Wood stabiliser for all repair products	Fast, small repairs and splicing	For all repairs, all year round	Small and big repairs, without time constraints	For all repairs all year round	For quicker repairs at lower temperatures	Very quick spot repairs	Putty replacement and new glazing	
Application temperature	0 - 35°C	0 - 25°C	0 - 35°C	10 - 35°C	0 - 35°C	0 - 20°C	0 - 30°C	5 - 40°C	
Repair thickness	-	• 5 - 15mm at 0 - 10°C • 5 - 10mm at 10 - 25°C	• 5 - 50mm at 0 - 10°C • 5 - 20mm at 10 - 35°C	5 - 50mm	5 - 50mm	• 5 - 50mm at 0 - 10°C • 5 - 25mm at 10 - 20°C	0 - 6mm	-	
Ready for sanding and painting (at 20°C) ***	-	After 1 hour	After 4 hours	After 16 hours	After 12 hours	After 3 hours	After 30 minutes	After 2 hours	
Penetration time	20 - 45 minutes After that remove the excess DRY FIX®. Within 24 hours apply DRY FLEX®/ BIO FLEX™								
Application period (at 20°C)	1 hour	15 - 20 minutes	20 - 25 minutes	1.5 - 2 hours	15 - 20 minutes	20 minutes	7 - 10 minutes	15 minutes	
Content tubes	200ml component A 100ml component B	200 ml component A 100 ml component B	300 ml component A 100 ml component B	300ml component A 100ml component B	300ml component A 100ml component B	300ml component A 100ml component B	180ml	290ml	
Storage temperature	5 - 40°C	5 - 40°C	5 - 40°C	5 - 40°C	5 - 40°C	5 - 40°C	5 - 30°C	5 - 30°C	

* Also available as DRY FIX® Small where the A component contains 80ml and the B component contains 40ml. ** Also available as DRY FLEX® (2-in-1) where the tube contains 180ml. *** Depending on layer thickness, humidity and temperature.

Total Joinery Repair Solutions

Repair Care is the global leader in providing quality products for joinery repairs to the professional market. In addition to comprehensive advice, project management and consultation services, we offer training on how to use the products to renovate decayed and damaged timber.

Supported by a 10-year insurance backed guarantee, when a repair is carried out by a trained contractor, the permanent repair of the timber offers significant environmental advantages and reduces future maintenance costs. This has made Repair Care a trusted partner of specifiers, local authorities and building owners for over 25 years.

CONTENTS

Page 4	DRY FIX®/DRY FLEX®
Page 5	BIO FLEX™ ALLROUND
Page 6	BIO FLEX™ COOL - DRY FLEX® 1
Page 7	DRY FLEX®4 - DRYFLEX®16
Page 8	DRY FIX®UNI - DRY FLEX®SF
Page 9	DRY SEAL™ MP
Page 10	Training - Trained Contractor Course
Page 11	EASY•Q™ Dosing Guns & Systainer
Page 12	EASY•Q™ Wood Meter, Gloves, Wipes & Brushes
Page 13	EASY•Q™ Mix & Fix Set, Mixing Plate, Perspex Sheets, Brick Tape & Scraper
Page 14	EASY•Q™ Metal & Plastic Application Knives, Butter Knife and Sealant Applicator
Page 15	Trial Pack, Applicator Pack & Specialist Pack

DRY FIX®/DRY FLEX®

Products for permanent resin repairs

Repair Care stands for total solutions for sustainable timber restoration and maintenance. Not only do we have a wide range of quality products for joinery repair for the professional market, we offer training on how to use them to refurbish decayed and damaged timber. In addition, we provide comprehensive project management, offer advice and consultation services and are a trusted partner of many housing associations and local authorities.

The DRY FIX®/DRY FLEX® system is the only durable solution for decayed and damaged joinery. DRY FIX® primers penetrate deep into the fibres of the wood ensuring that DRY FLEX® bonds permanently. Based on a unique epoxy resin formula, DRY FLEX® remains elastic so that it accommodates any movement in the timber.

DRY FIX®/DRY FLEX® products come with up to two years shelf-life and are supplied With a stopper and screw lid, allowing you to get to work quickly and cleanly.

Solvent-free and shrink resistant, all products offer exceptional modelling properties and slump resistance. Once cured, DRY FLEX® can be sanded, painted, planed and drilled. In fact you can treat it just like wood!



“We have been using the Repair Care system for over fifteen years. Whatever the problem, there is always a great product in the range to sort it out.

DRY FLEX® is so fast and easy to use; and it makes the paint last longer. For the highest quality products, with a complete back-up service, there's nothing else on the market that even comes close!”

Mark Carthy, Dec To Spec Ltd

THE 7 STEPS TO A DURABLE WOOD REPAIR



Remove paint & dirt



Remove all decay



Prime with DRY FIX®



Apply DRY FLEX®



Shape and finish repair



Sand finished repair



Apply paint finish

Repair & Restore to Save Our Heritage



Our Repair Care system provides a **sustainable alternative** to traditional joinery repairs. This ensures that **only decayed** and de-natured **timber is removed, leaving as much** of the original joinery, detailing, moulding and **original historic woodwork** as possible. The **conservation industry** now have a **solution available** to them that offers durable repairs and the ability to **conserve existing timber**.

BIO FLEX™ ALLROUND BF

For all repairs throughout the year

BIO FLEX™ ALLROUND is the first bio-based epoxy repair resin for all types of repair throughout the year.



Product Features

- To be used in conjunction with DRY FIX® UNI.
- Contains 40% bio-based raw materials.
- Certified, OK bio-based – 1 star.
- Ready for sanding and painting after 12 hours (at 20°C).
- For repairs with a layer thickness of 5 - 50mm.
- Application temperature: 0 - 35°C.
- Application time: 15 - 20 minutes at 20°C.
- Does not shrink.
- Slump resistant.
- Easy to apply and very easy to mold.
- Built-in mixing control system.

BIO FLEX™ COOL

For quick repairs at lower temperatures

BIO FLEX™ COOL fastest curing resin at lower temps and is particularly suitable at temperatures below 15°C. It is ideal for both small and large repairs. Used in conjunction with DRY FIX® UNI to ensure maximum adhesion with the substrate.



Product features:

- To be used in conjunction with DRY FIX® UNI.
- For repairs 5 - 50mm deep*.
- Can be sanded and painted after 15 hours (at 10°C).
- Application temperature 0 - 20°C.
- Application period 20 - 25 minutes
- Excellent modelling qualities.
- Does not shrink.
- Slump resistant.
- Colour control mixing system; turns uniform transparent green when fully mixed.
- Bio-based formulation.

* At 0 - 10°C: 5 - 50mm; at 10 - 20°C: 5 - 25mm

DRY FLEX® 1

For very fast, small repairs

DRY FLEX® 1 is the fastest curing permanent repair product on the market. It combines excellent modelling characteristics with a very short curing time. DRY FLEX® 1 is suitable for small quick repairs, splicing and responsive maintenance. DRY FIX® 1 provides maximum adhesion between DRY FLEX® 1 and the substrate.



Product features:

- To be used in conjunction with DRY FIX® UNI.
- For repairs 5 - 15mm deep*.
- Can be sanded and painted after 1 hour (at 20°C).
- Application temperature: 0 - 25°C.
- Application period: 15 - 20 minutes
- Excellent modelling qualities.
- Does not shrink.
- Slump resistant.
- Mixing control system: turns uniform pink when mixed.

* At 0 - 10°C: 5 - 15mm; at 10 - 25°C: 5 - 10mm.

* Now available in a small size of 120ml per set

Also available in convenient single tube, DRY FLEX® 1 (2-in-1) fits into a standard skeleton gun.

DRY FLEX® 4

For all repairs

DRY FLEX® 4 is ideal for permanent small to medium repairs which can be sanded and painted on the same day. DRY FLEX® 4 can be used from 0 - 35°C so is suitable for use all year round. DRY FIX® 4 provides maximum adhesion between DRY FLEX® 4 and the substrate.



Product features:

- To be used in conjunction with DRY FIX® UNI.
- For repairs 5 - 50mm deep*.
- Can be sanded and painted after 4 hours (at 20°C).
- Application temperature: 0 - 35°C.
- Application period: 20 - 25 minutes.
- Excellent modelling qualities.
- Does not shrink
- Slump resistant
- Mixing control system: turns uniform transparent orange when mixed.

* At 0 - 10°C: 5 - 50mm; at 10 - 35°C: 5 - 20mm

* Now available in a small size of 120ml per set

Also available in convenient single tube, DRY FLEX® 1 (2-in-1) fits into a standard skeleton gun.

DRY FLEX® 16

For larger repairs

DRY FLEX® 16 has exceptional slump resistance and modelling characteristics making it ideal for larger repairs. With an application time of up to 2 hours, DRY FLEX® 16 is suitable for large scale projects. DRY FIX® 16 provides maximum adhesion between DRY FLEX® 16 and the substrate.



Product features:

- To be used in conjunction with DRY FIX® UNI.
- For repairs 5 - 50mm deep.
- Can be sanded and painted after 16 hours (at 20°C).
- Application temperature: 10 - 35°C.
- Application period: 1.5 - 2 hours.
- Excellent modelling qualities.
- Does not shrink.
- Slump resistant.
- Mixing control system: turns uniform green when mixed.

DRY FIX® UNI

Universal stabiliser for all DRY FLEX® repair products.

DRY FIX® UNI is a universal stabiliser ensuring maximum adhesion between any DRY FLEX® repair product and the substrate.



Product features:

- Compatible with BIO FLEX™ ALLROUND, BIO FLEX™ COOL, 1, 4 & 16.
- Extra long pot-life of 1 hour.
- Repairs with any DRY FLEX® can be completed up to 24 hours after application of DRY FIX® UNI.
- Application temperature: 0 - 35°C.
- Unique colour control mixing system; turns yellow when fully mixed.
- Solvent free.

* Now available in a small size of 120ml per set

DRY FLEX® SF

Durable fine surface filler

DRY FLEX® SF is a high performance fine surface filler. Suitable for weathered timber, cracks, nail holes and small defects. Easy to apply and extremely fast curing, DRY FLEX® SF is the only permanent, flexible epoxy based surface filler available.



Product features:

- For repairs 0 - 6mm deep.
- Excellent adhesion to all substrates.
- Can be sanded and painted after 30 minutes (at 20°C).
- Application temperature: 0 - 30°C.
- Application period: 7 - 10 minutes.
- No primer necessary.
- Does not shrink.
- Slump resistant.

DRY SEAL™ MP

Multi-purpose putty replacement

DRY SEAL™ MP is a moisture and UV-resistant alternative to traditional putty. Unlike linseed oil putty, it cures very quickly and remains permanently elastic, with excellent adhesion to glass, wood, metal and stone. Independently tested, it is the only product guaranteed to be compatible with hot-melt butyl, PVB foils and glazing tapes.

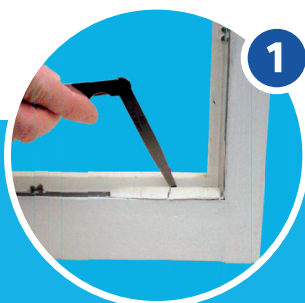


Product features:

- Can be painted in as little as 2 hours (at 20°C).
- Application temperature: 5 - 40°C.
- Application period: 15 minutes.
- Available in white and brown.
- Can be used in a standard skeleton gun.

DRY SEAL™ MP is a quick to apply bedding and face glazing compound and is particularly suitable for new window manufacture and all restoration applications. It is ideal for glazing new windows and renovation projects as it is compatible with double-glazing, including slim-line units, laminated and acoustic glass.

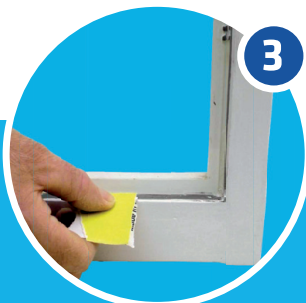
THE 7 STEPS TO A DURABLE WATERTIGHT SEAL



Check adhesion



Remove loose putty



Clean and sand rebate



Prime rebate



Cut the nozzle to form the glazing profile and apply DRY SEAL™



Smooth the surface



Apply paint finish

Training

Trained Contractor Course

The programme consists of a mixture of theoretical and practical elements, with the emphasis very much on 'hands-on' experience. Information about the causes of timber decay will be discussed along with an overview of how to identify and assess existing damage. Following an introduction to the range of Repair Care systems, all delegates will have the opportunity to extensively use the tools and products needed to achieve a perfect repair. All delegates can take away full product and system information and their own sample window sections from the practical session, the course also includes light refreshments.

Program

Timber and joinery

- Product characteristics and uses
- Causes of decay
- Why repair: the benefits of conservation
- Traditional repairs

The Repair Care System

- Product range
- Repair Care Working Methods
- How to inspect the property
- Repair Care Costing Sheet
- Health & Safety

Business opportunities

- Unique 10 year guarantee
- Costing a project
- Marketing support & material

Practical

- Preparation
- Demonstration of tools and products
- Standard product application and finishing
- Demonstration of additional repair methods



Recognition

After successful completion of the course, operatives will be issued with a certificate and personal Repair Care pass card.

Validity

The training is valid for 4 years, after which operatives are encouraged to take a Refresher course.

EASY•Q™ High Performance Dosing Gun

High performance dosing gun for dispensing all DRY FLEX® products.



- The most powerful and user-friendly universal* 2K dosing gun.
* it can dose all common professional epoxy products: 300-100ml, 300-300ml, 200-100ml.
- A torsion-resistant design, so that the dosing of both components is always even.
- Contributes to clean and safe working and working environment. For example, the tubes cannot fall out of the gun and the caps can be placed on the tubes when the tubes are placed in the dosing gun.

EASY•Q™ Lightweight Dosing Gun

Lightweight double barrelled dosing gun for dispensing all DRY FLEX® products.



- High quality fibre-glass reinforced nylon construction.
- Sliding tab to support 100, 200 and 300ml tubes.
- Patented automatic pressure release system.
- Rigorously tested.

EASY•Q™ Professional Dispensing Gun

Heavy duty single barrelled dispensing gun for DRY SEAL™ MP and all 2-in-1 products.



- Robust metal construction with reinforced handle.
- Rotating barrel for easy application of product at all angles.
- Geared mechanism for easy, smooth dosing of viscous products.

EASY•Q™ Systainer

For storing and transporting products and tools.



- Equipped with T-loc closure allowing systainers to be connected.
- Also fits on the systainers of Makita and Festool, among others.
- Dimensions: 40 x 30 x 42 cm (WxDxH).
- Equipped with label holder for storing and transporting products and tools.

EASY•Q™ Wood Condition Meter

Wood Condition Meter to measure moisture content. Also suitable for checking the presence of soft wood.



- Simple traffic light system and audible warning for quick readings.
- Equipped with a battery check function (battery included).

EASY•Q™ Disposable Nitrile gloves

Essential when working with epoxy. Additional protection of hands, wrists and forearms.



- Extra long 30cm gauntlet for added protection.
- The only Nitrile gloves conforming to European standards regarding personal protective equipment.
- Textured fingertips for a better grip.
- Powder and latex free (suitable for sensitive skin).
- White color to highlight when contaminated.
- Available in sizes L and XL.

EASY•Q™ WIPES 75/150

Wet wipes specially formulated for the quick and effective cleaning of tools and hands. Complete removal of epoxy, paint, grease, grime and oil.



- Unique texture with high absorbency.
- Super size wipe (21 x 30cm), requiring fewer wipes to be used.
- Wide opening and resealable lid, to keep wipes moist.
- Available with 75 or 150 wipes.

EASY•Q™ Disposable Brushes

Suitable for the application of DRY FIX™



- Box of 12 Paint Brushes (1/2") for application of DRY FIX®.

EASY•Q™ MIX & FIX™ set



Cup and a wooden mixing spatula set for mixing DRY FIX®.

- Spill-resistant and stable MIX & FIX™ cup.
- For efficient mixing without splashing.
- Special heat resistant coating inside the cup to protect the user when mixing DRY FIX®.
- Disposable brushes available separately.
- Available as a pack of 50.

EASY•Q™ Mixing Plate



Mixing plate for use with all types of DRY FLEX®.

- Smooth surface for easy mixing of DRY FLEX®.
- Easy to clean with EASY•Q™ WIPES.
- Bright white finish to make removal of all residue easier.
- Raised edge for stable grip.
- Size: 270 x 440 mm.

Perspex sheets



To form a profiling edge and aid the modelling of DRY FLEX®.

- Precision cut Perspex sheets.
- Pack includes 5 strips, all 500mm long.
- One of each 7, 15, 25, 40 and 50mm widths.

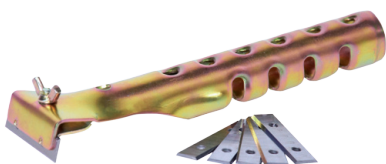
EASY•Q™ Brick Tape



For masking (brick) stone. Width 10 cm.

- Please note: do not use this tape on smooth surfaces, as there is a risk that the strong adhesive layer will remain.
- Content: 40 meters.

Repair Care Scraper™



For removing paint and finishing cured repairs.

- Robust steel construction with 50mm wide blade.
- Ideal for removing paint prior to application of DRY FLEX®.
- Quickly pares back cured repair before painting.
- Includes one Tungsten Carbide reversible blade (pack of 5 replacement blades available).

EASY•Q™ Metal Application Knives

EASY•Q™ stainless steel application knives for the mixing of Repair Care products and the modelling of repairs.



- Unique stainless steel blade shape with right-angled edges, making it easy to form accurate corners.
- Easy to clean with EASY•Q™ WIPES.
- Long, ergonomic handles for a comfortable grip and clean working.
- Available in five options:
 - 3 cm: for applying DRY FLEX®.
 - 5 cm: for mixing DRY FLEX®.
 - 10 cm: for smaller repairs.
 - 15 cm: for larger repairs.
 - available as a pack of 4.

EASY•Q™ White Buttering Knife

For applying the repair paste in hard-to-reach areas. The buttering knife is part of the Special Tools. These include time-saving tools that increase the quality and durability of repairs.



- Long, ergonomic handle for a firm grip.
- Made of stainless steel.
- Extra narrow blade.
- Easy to clean using the EASY•Q™ WIPES.

EASY•Q™ Plastic Application Knives

EASY•Q™ plastic application knives for the mixing of Repair Care products and the modelling of repairs.



- Unique plastic blade shape with right-angled edges, making it easy to form accurate corners.
- Easy to clean with EASY•Q™ WIPES.
- Long, ergonomic handles for a comfortable grip and clean working.
- Available in five options:
 - 4 cm: for applying DRY FLEX®.
 - 8 cm stiff (green knife): for mixing DRY FLEX®.
 - 8 cm: for smaller repairs.
 - 13 cm: for larger repairs.
 - available as a pack of 4.

EASY•Q™ Applicator

Silicone applicator for use with DRY SEAL™ MP.



- Flexible construction for smooth application of DRY SEAL™ MP.
- Specially designed corners to achieve different application angles.
- Reusable and easy to clean.

Trial Pack

Introductory kit, with everything needed to start using the Repair Care system.



Contains:

- 1 set of DRY FLEX® 4.
- 1 set of DRY FIX® 4 (small).
- 4 EASY•Q™ Disposable Nitrile gloves.
- 6 EASY•Q™ WIPES.
- EASY•Q™ Plastic Application Knives (pack of 4).
- EASY•Q™ Lightweight Dosing Gun.
- EASY•Q™ Mixing Plate (small).
- EASY•Q™ MIX & FIX™ 2 cups & sticks and 3 brushes.

Contractor Pack

Application pack for the regular user of the Repair Care system.



Contains:

- EASY•Q™ High Performance Metal Dosing Gun.
- Set of 4 EASY•Q™ metal application knives.
- EASY•Q™ MIX & FIX™ 12 cups and sticks.
- 12 disposable brushes.
- EASY•Q™ mixing plate.
- Repair Care scraper.
- Set of 10 Perspex strips.
- Box of 50 EASY•Q™ disposable Nitrile gloves.
- 150 EASY•Q™ WIPES.

Specialist Pack

A recommended set of tools and accessories for the professional repair specialist.



Contains:

- Repair Care Mini- PROFI™ 110 or 240 volts.*
- 2 round economy cutters.
- EASY•Q™ Wood Condition Meter.
- EASY•Q™ Heavy Duty Metal Dosing Gun.
- Set of 4 EASY•Q™ Metal Application Knives.
- EASY•Q™ MIX & FIX™ 12 cups and sticks.
- 12 disposable brushes.
- EASY•Q™ Mixing Plate.
- Repair Care scraper.
- Set of 10 Perspex strips.
- Box of 50 EASY•Q™ Disposable Nitrile gloves.
- 150 EASY•Q™ WIPES.
- EASY•Q™ Professional Dispensing Gun.
- EASY•Q™ sealant applicator for DRY SEAL™ MP.

*profi available separately on request.



www.repair-care.co.uk

Repair Care United Kingdom
Tel: 01827 302 517
E-mail: salesuk@repair-care.com

Repair Care Nederland
Tel: +31 (0)416 65 00 95
E-mail: salesnl@repair-care.com

Repair Care Deutschland
Tel: +49 (0)30 41 70 63 76
E-mail: salesde@repair-care.com